

- [Home](#)
- [Tutoune Software](#)
- [TiouneMonitor](#)
- [FAQ](#)



[Skip to content](#)

- [Register](#)
- [Login](#)
- [Options](#)
- [Board index](#) < [PROJECTS \(English Section\)](#) < [MiniTiouner](#)
- [Print view](#)

2 posts • Page 1 of 1

[How to setup your FT2232H for the MiniTiouner](#)

[How to setup your FT2232H for the MiniTiouner](#)

by [F6DZP](#) » Fri 16 Sep 2016 04:01

Instructions to program the FT2232H for your Minitiouner

Before we can use the MiniTiouner, we need to install the driver and to program the minimodule FT2232H.

You will need to download 3 files :

- the FTDI CDM driver : http://www.ftdichip.com/Drivers/CDM/CDM21218_Setup.zip from <http://www.ftdichip.com/Drivers/D2XX.htm>
- the software FTprog : http://www.ftdichip.com/Support/Utilities/FT_Prog_v3.2.76.375%20Installer.exe
- the template I have made :

Ⓜ [using NIM tuner.zip](#)

(928 Bytes) Downloaded 1325 times

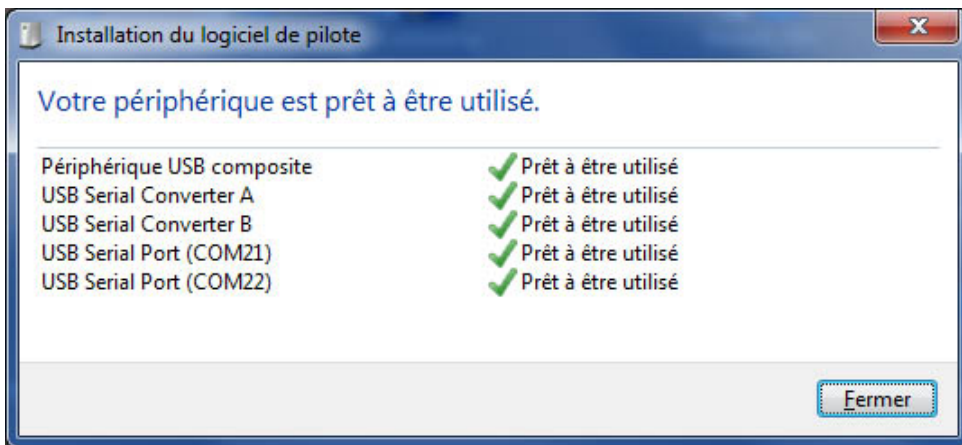
[Please note, if you have old drivers , first do a cleanup - see next post]

1)Installing the driver:

unzip the CDM212xx_Setup.zip and run the CDM212xx_Setup.exe as administrator.
This will install the driver and the D2XX.dll.

2) Plug the MiniTiouner to your PC . Use a good quality USB cable

Then when you plug your MiniModule for the first time , Windows will install the drivers that correspond to the default setting of your minimodule .



installation minimodule FT2232H.jpg (52.39 KiB) Viewed 9222 times

USB serial Port numbers may change according to what was already on your PC.

We have now to change these bad settings(we don't need Serial Ports , but I2C channel and FIFO channel).

We will use for that FTprog. (user guide is here :

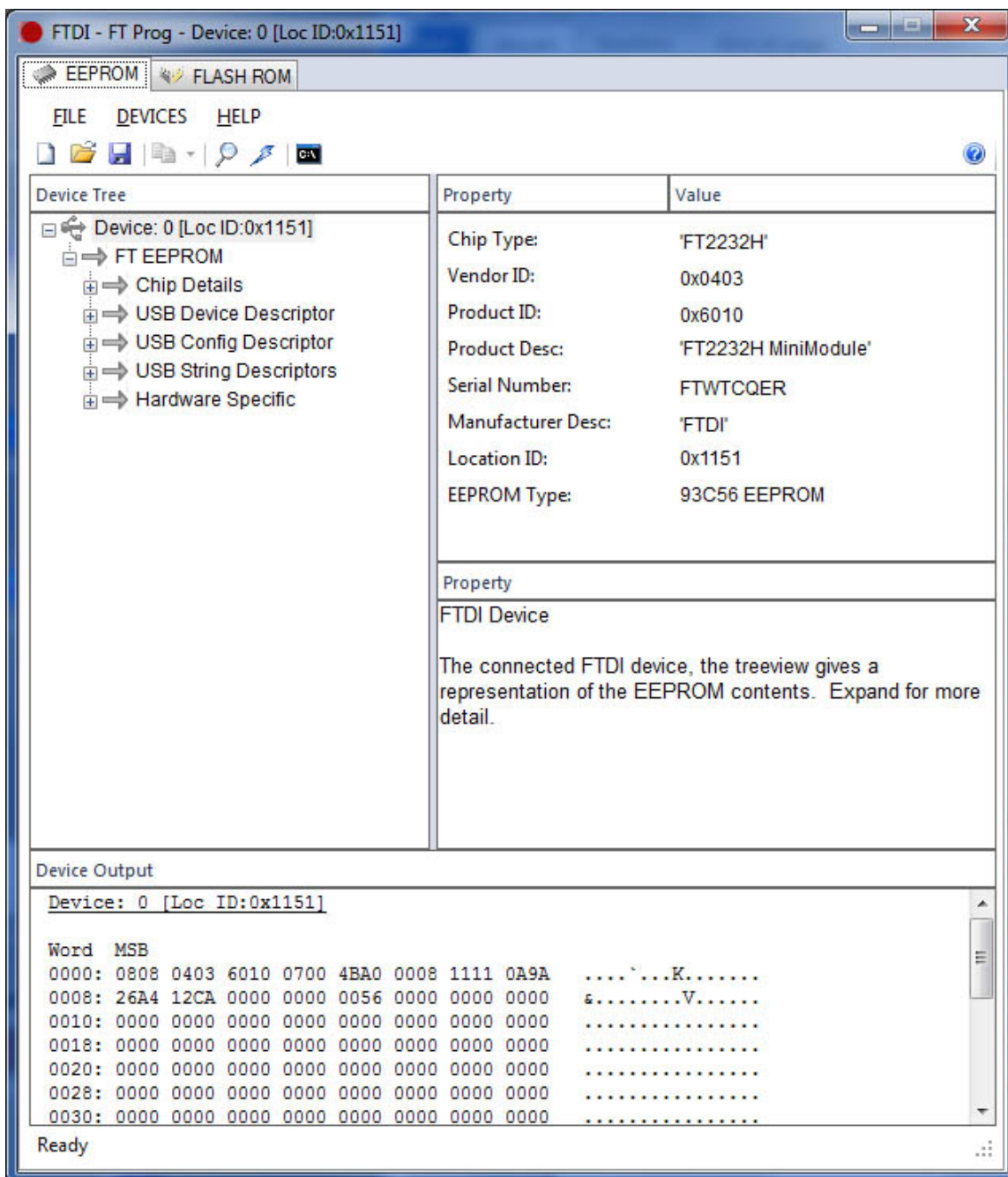
http://www.ftdichip.com/Support/Documents/AppNotes/AN_124_User_Guide_For_FT_PROG.pdf)

Installing FTprog and run it .

If it does not display the Device, make it find it (F5)

EEPROM ==> DEVICES ==> Scan and Parse

you will see :



FT_Prog after F5 on a new minimodule.jpg (138.24 KiB) Viewed 9222 times

Looking at the details , it has default modes that not totally suit us (RS232 UART).

| Device Tree | Property | Value |
|---|--|--|
| <div> Device: 0 [Loc ID:0x1151] <ul style="list-style-type: none"> FT EEPROM <ul style="list-style-type: none"> Chip Details USB Device Descriptor USB Config Descriptor USB String Descriptors Hardware Specific <ul style="list-style-type: none"> Suspend DBUS7 TPRDRV Port A <ul style="list-style-type: none"> Hardware <ul style="list-style-type: none"> UART 245FIFO CPUFIFO OPTO Driver <ul style="list-style-type: none"> VCP D2XX Port B IO Pins </div> | RS232 UART 245 FIFO CPU FIFO OPTO Isolate | <input checked="" type="radio"/> <input type="radio"/> <input type="radio"/> <input type="radio"/> |
| | Property | |
| | Hardware | Each channel can be independently configured as RS232 UART/245FIFO/CPU FIFO or OPTO Isolate. See the Datasheets available from the FTDI website for further details. |

Default hardware UART mode.jpg (76.95 KiB) Viewed 9222 times

This mode for Port A is OK, it will be changed by the software to I2C mode which is close to serial mode. But the way it is driven (Virtual COM port) is not the good one.

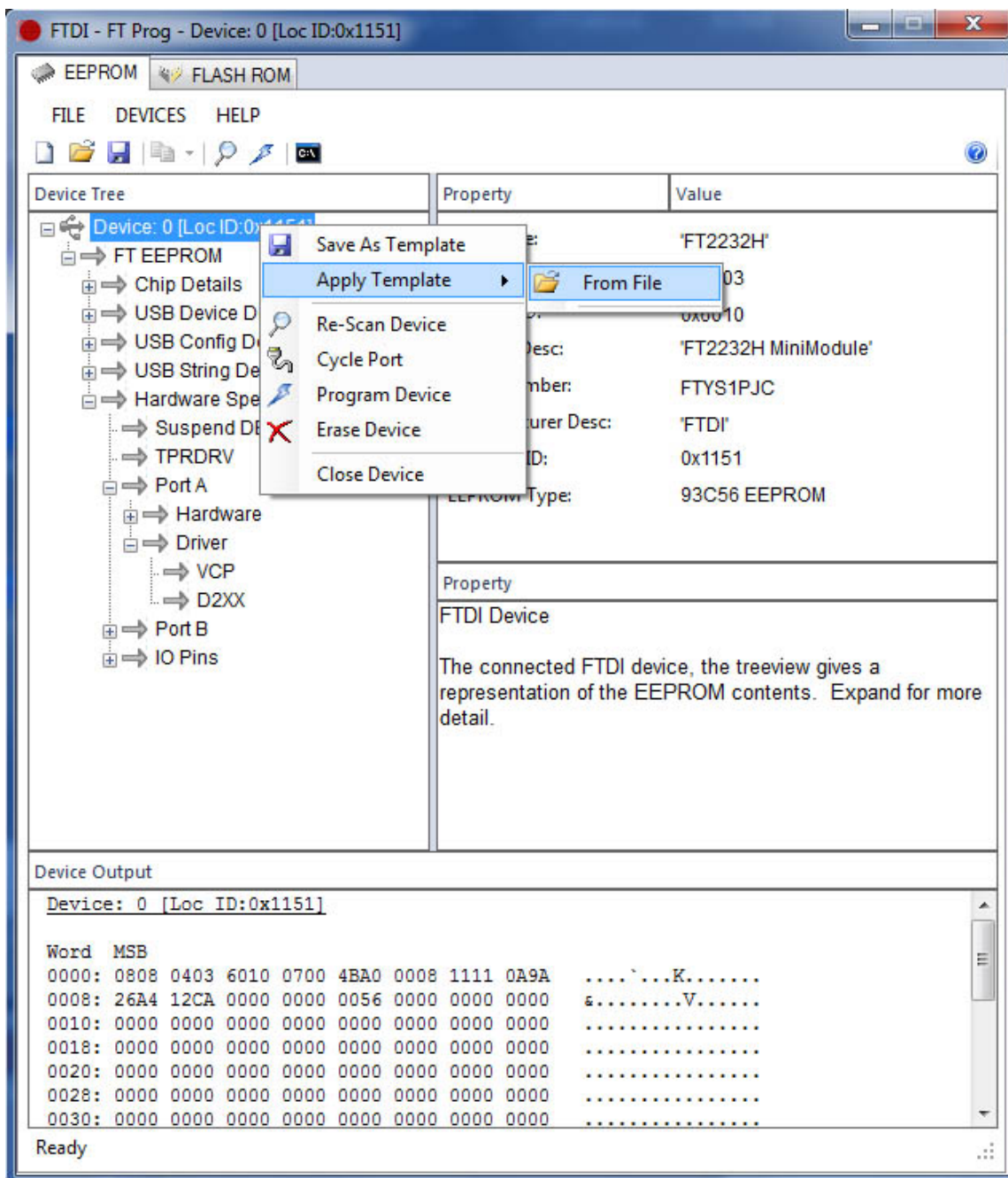
| Device Tree | Property | Value |
|---|---------------------------------|---|
| <div> Device: 0 [Loc ID:0x1151] <ul style="list-style-type: none"> FT EEPROM <ul style="list-style-type: none"> Chip Details USB Device Descriptor USB Config Descriptor USB String Descriptors Hardware Specific <ul style="list-style-type: none"> Suspend DBUS7 TPRDRV Port A <ul style="list-style-type: none"> Hardware <ul style="list-style-type: none"> UART 245FIFO CPUFIFO OPTO Driver <ul style="list-style-type: none"> VCP D2XX Port B IO Pins </div> | Virtual COM Port D2XX Direct | <input checked="" type="radio"/> <input type="radio"/> |
| | Property | |
| | Virtual COM Port / D2XX | The driver that is installed and used by each channel can be set by selecting Virtual COM Port or D2XX Direct option. |

default virtual com port Driver.jpg (71.38 KiB) Viewed 9222 times

There 's not going at all because we will work with the D2XX driver that allows for the maximum bandwidth of a USB port that has nothing to do with a COM port RS232 output.

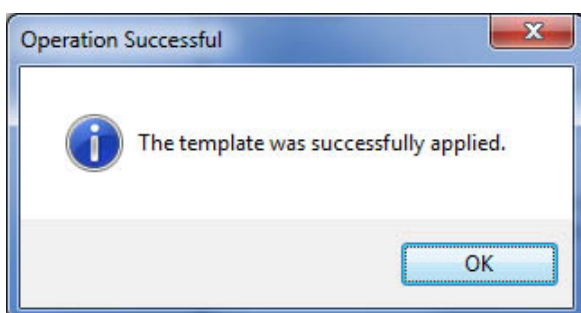
We will reschedule for this is simple by using the template "using NIM tuner.xml " file you have downloaded .

For that, click-right on the title Device0, select ==> Apply template ==> from File and choose « using NIM tuner.xml »



apply template.jpg (149.83 KiB) Viewed 9222 times

and you get the message:



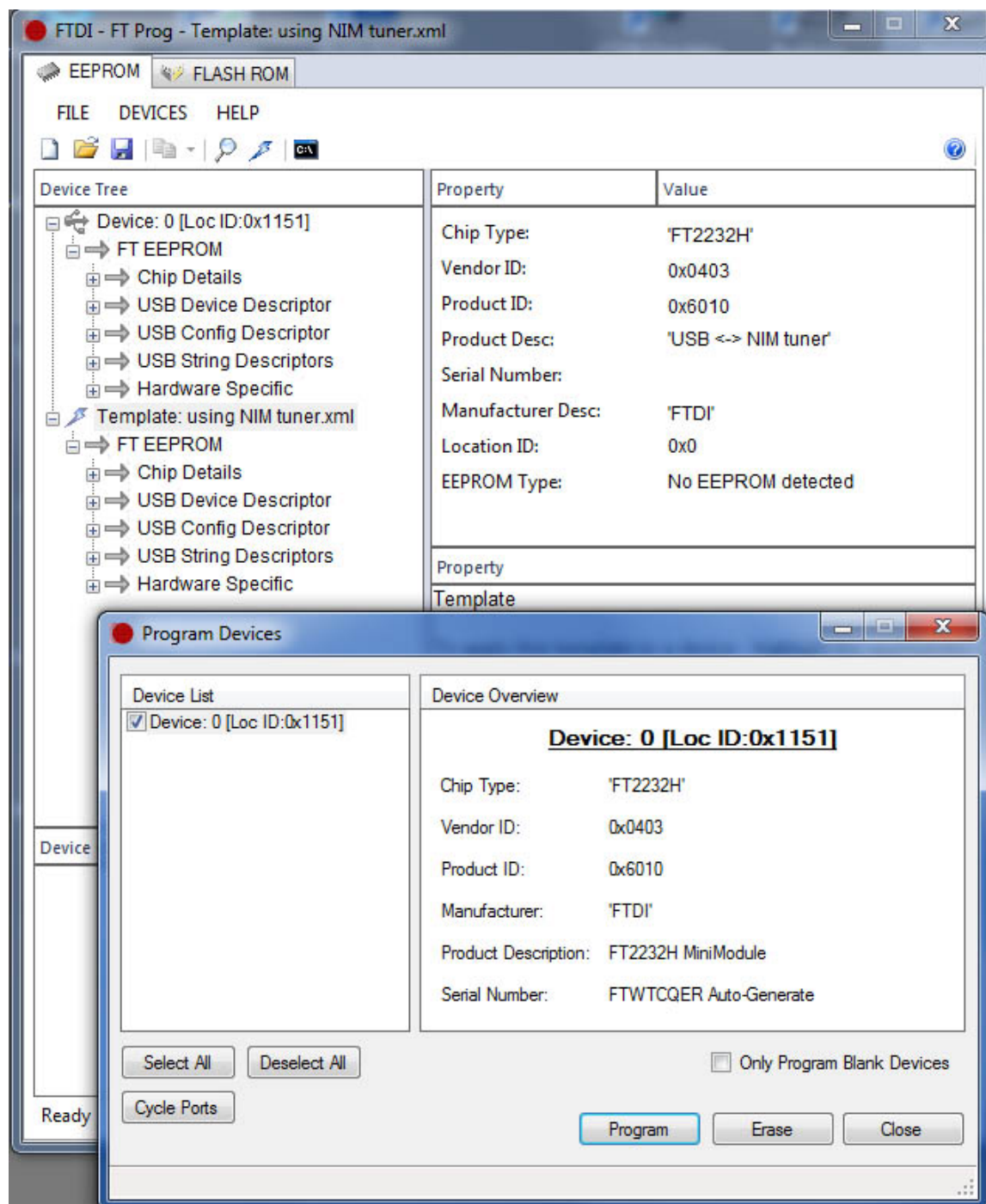
template application success.jpg (29.33 KiB) Viewed 9222 times

it is clear that the description of the module is now called " [b] USB <-> NIM tuner [/ b]" .

It is very important to recognize the MiniTioner, if you have several USB interfaces connected at the same time .

Then, to write this setting in eeprom of FT2232H, we do:

DEVICES ==> program
This opens a window :



programming template.jpg (138.12 KiB) Viewed 9221 times

We click on the button "program" bottom right
In 1 sec seen "Finished programming" and "Ready" at the bottom left ! That's it that's all.
One can check the new settings :

Device Tree

Device: 0 [Loc ID:0x1151]

FT EEPROM

Chip Details

USB Device Descriptor

USB Config Descriptor

USB String Descriptors

Hardware Specific

Suspend DBUS7

TPRDRV

Port A

Hardware

UART

245FIFO

CPUFIFO

OPTO

Driver

Port B

Hardware

UART

245FIFO

CPUFIFO

OPTO

Property

Value

RS232 UART

☐

245 FIFO

☒

CPU FIFO

☐

OPTO Isolate

☐

Property

Hardware

Each channel can be independently configured as RS232 UART/245FIFO/CPU FIFO or OPTO Isolate. See the Datasheets available from the FTDI website for further details.

PortB after template.jpg (82.02 KiB) Viewed 9221 times

PortB is now programmed in the "245 FIFO" mode.

Device Tree

USB Device Descriptor

USB Config Descriptor

USB String Descriptors

Hardware Specific

Suspend DBUS7

TPRDRV

Port A

Hardware

UART

245FIFO

CPUFIFO

OPTO

Driver

Port B

Hardware

UART

245FIFO

CPUFIFO

OPTO

Driver

VCP

D2XX

Property

Value

Virtual COM Port

☐

D2XX Direct

☒

Property

Virtual COM Port / D2XX

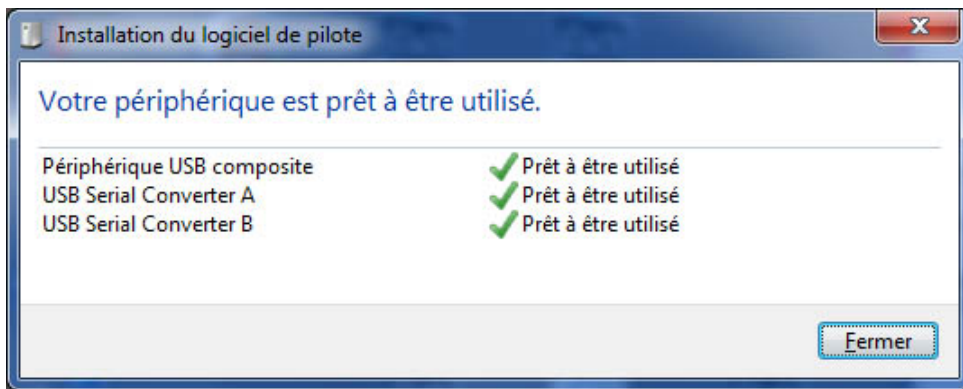
The driver that is installed and used by each channel can be set by selecting Virtual COM Port or D2XX Direct option.

PortB and A Driver after template.jpg (66.84 KiB) Viewed 9221 times

Porta and PortB will use the pilot D2XX Direct and not the Virtual COM Port mode.

We leave FT_Prog .

The USB cable is disconnected and is reconnected . This loads the drivers in the new mode :



re installation Minimodule.jpg (44.06 KiB) Viewed 9221 times

Now you can test your MiniTiouner using the software TestMyMiniTiouner (Inside Minitioune package)

Jean-Pierre F6DZP

[F6DZP](#)

Posts: 995

Joined: 24 Dec 2010

[Top](#)

[Re: How to setup your FT2232H for the MiniTiouner](#)

by [F6DZP](#) » Fri 16 Sep 2016 05:06

Before installing the drivers think of clean old who can hang with the software " CDM uninstaller "

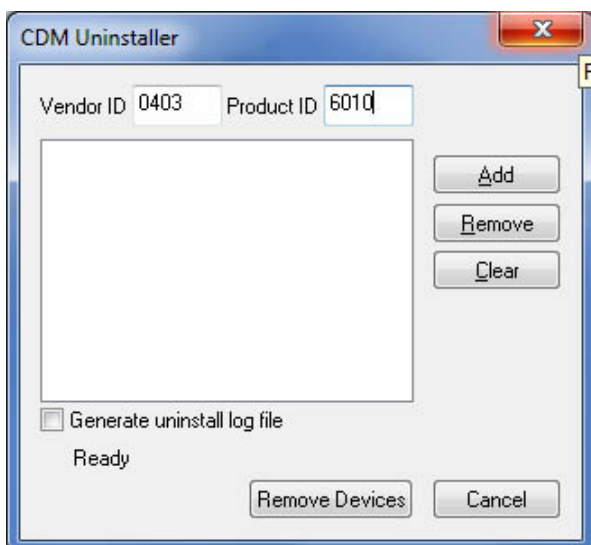
Download the uninstaller software here:

http://www.ftdichip.com/Support/Utilities/CDMUninstaller_v1.4.zip

Unzip **CDMUninstallerGUI.zip** and run it.

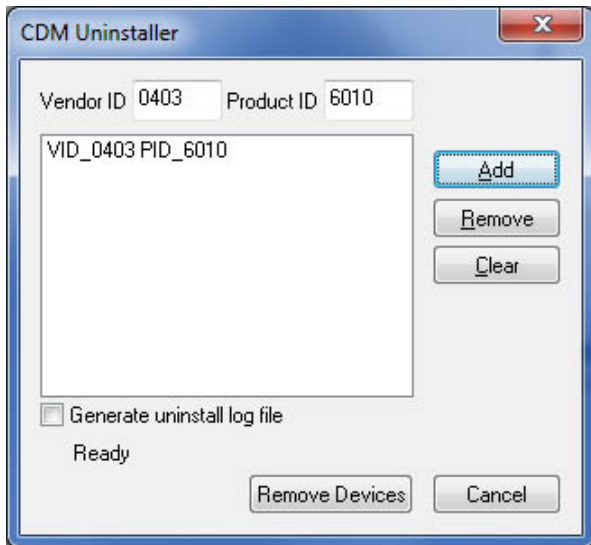
you can get some info here : http://www.ftdichip.com/Support/Utilities/CDM_Uninst_GUI_Readme.html

It must first designate which driver what equipment we want clean : write **0403** and **6010**



CDM uninstaller_1.jpg (39.17 KiB) Viewed 9220 times

Click "Add" and you get :



CDM uninstaller_2.jpg (41.43 KiB) Viewed 9220 times

Click **Remove devices**

and you get:

Removed successful

You can now install CDM v2.12.nn WHQL Certified .

Jean-Pierre f6DZP

[F6DZP](#)

Posts: 995

Joined: 24 Dec 2010

[Top](#)

Display posts from previous: All posts ▼ Sort by Post time ▼ Ascending ▼ Go

2 posts • Page 1 of 1

Forum Statistics

Who is online

Users browsing this forum: No registered users and 1 guest

Options

[Return to MiniTiouner](#)

Jump to: MiniTiouner ▼ Go

Skin: X-Silver 3.0.8.1 - Designed by: [Skin-Lab](#) © 2010

Powered by [phpBB](#) © 2000, 2002, 2005, 2007 phpBB Group